



A Regional Transportation Solution

**Section 8 Preliminary Design
Update**

March 29, 2016



We'd like to thank you for attending this Wekiva Parkway Section 8 Preliminary Design Update hosted by the Florida Department of Transportation. We will provide you information on the overall project and schedules, and then focus on Section 8, which will connect the parkway to I-4 and SR 417, thereby completing the beltway.



Florida Department of Transportation

This meeting and project are being conducted without regard to race, color, national origin, age, sex, religion, disability or family status. Persons wishing to express their concerns relative to FDOT compliance with Title VI may do so by contacting:

Jennifer Smith
FDOT District Five Title VI Coordinator
719 South Woodland Boulevard
Deland, Florida 32720
386-943-5367
Jennifer.smith2@dot.state.fl.us

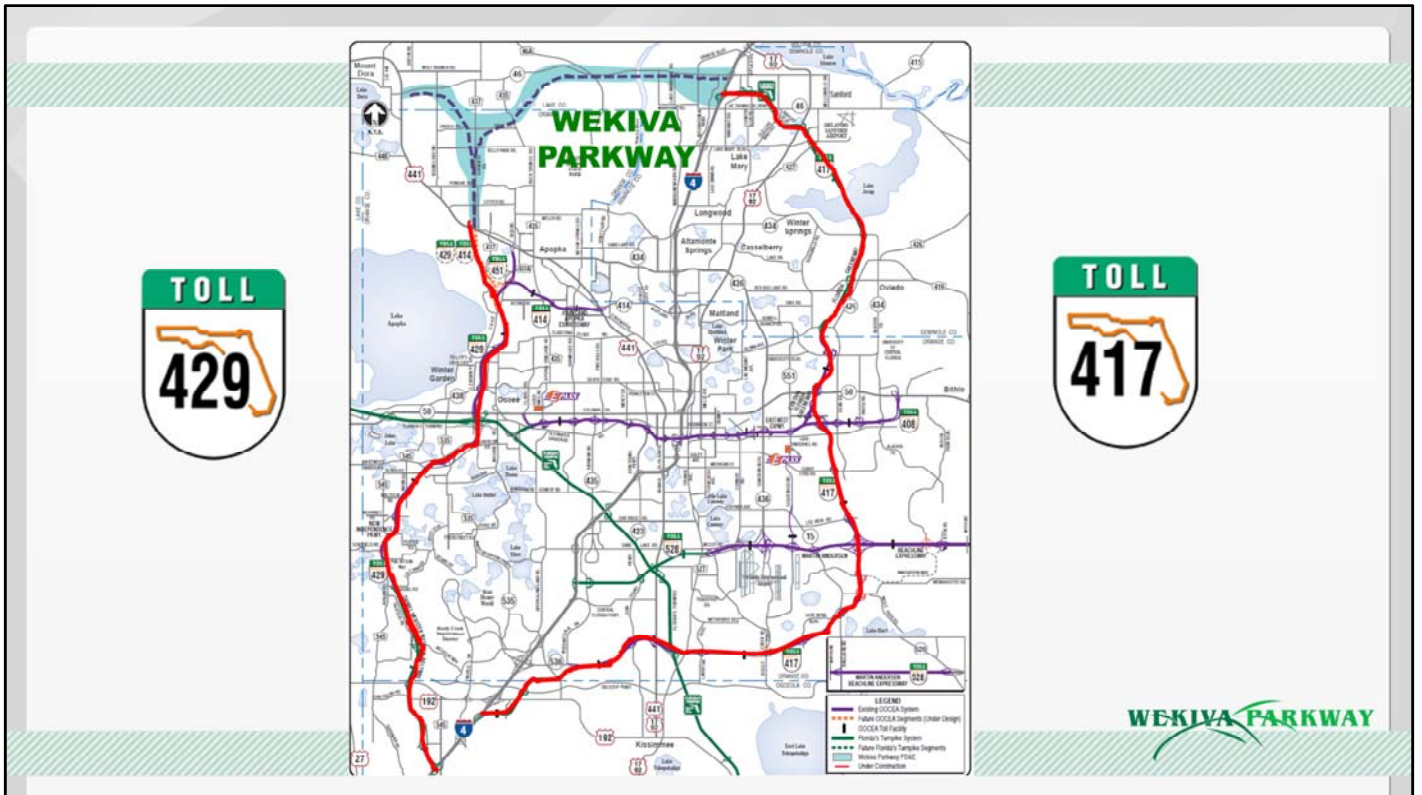
Jacqueline Paramore
State Title VI Coordinator
605 Suwannee Street, Mail Station 65
Tallahassee, FL 32399-0450
850-414-4753
Jacqueline.paramore@dot.state.fl.us

All inquiries or complaints will be handled according to FDOT procedure and in a prompt and courteous manner.



This meeting and project are being conducted without regard to race, color, national origin, age, sex, religion, disability or family status. Persons wishing to express their concerns relative to FDOT compliance with Title VI may do so by contacting the Department personnel shown here.

All inquiries or complaints will be handled according to FDOT procedure and in a prompt and courteous manner.



Here you can see how the 25-mile Wekiva Parkway will fill in the beltway’s “missing link.”
The parkway will also enhance safety and relieve congestion from local roads in Lake, Orange and Seminole counties.

Project Description

- **\$1.6 Billion Completion of Central Florida's Beltway**
- **25-mile Toll Road**
- **Non-Toll Road Improvements:**
 - **Improving SR 46 in Lake & Seminole Counties**
 - **Rebuilding the US 441/SR 46 Interchange**
 - **Parallel Service Roads in East Lake & Seminole Counties**
- **Multi-use Trail (Parts of East Lake & Seminole Counties)**
- **Nearly 36,000 Jobs (FHWA Formula: Direct & Indirect)**

CENTRAL
FLORIDA
EXPRESSWAY
AUTHORITY



WEKIVA PARKWAY

The \$1.6 Billion Wekiva Parkway – a new 25-mile toll road -- will include a number of non-toll road improvements:

- Widening about 7 miles of SR 46
- Rebuilding the US 441/SR 46 interchange in Mount Dora
- Moving part of CR 46A out of the Seminole State Forest so wildlife can move more safely between habitats
- And building parallel service roads for local travel

The Department also will be including a multi-use trail along much of its portion of the parkway.

The parkway is expected to help spur significant economic development, including creating nearly 36,000 jobs.

All Electronic Tolling (AET)

- First in Central Florida
- No Toll Plazas – No Cash
- Enhances Safety
- Maximizes Convenience
- AET Info on Website
- Reduces Noise & Pollution
- Improves Mobility
- Saves Money



WEKIVA PARKWAY

The Wekiva Parkway is the first expressway in Central Florida to feature All Electronic Tolling. There will be no toll plazas – motorists will pay their tolls at safe, highway speeds at toll gantries.

The Florida's Turnpike Enterprise will administer the Toll by Plate program on the Department's sections for those who do not have E-PASS or SunPass. In addition to the toll, there is an administrative fee of \$2.50/month to process Toll by Plate.

Protecting Nature

- **Wekiva River: Outstanding Florida Water & National Wild & Scenic River**
- **Authorized: 2004 Wekiva Parkway & Protection Act**
 - **Setting Aside More than 3,400 Acres for Conservation**
 - **Largely Elevated to Reduce Accidents Between Vehicles & Wildlife**
 - **Several Wildlife Bridges**
 - **Moving CR 46A Out of Seminole State Forest**
 - **Limited Interchanges (Curb New Development)**



WEKIVA PARKWAY

The Wekiva Parkway features unique environmental considerations to help protect wildlife and other natural resources in the Wekiva River Basin. The river is a National Wild and Scenic River, an Outstanding Florida Water and passes through habitat for dozens of species.

The agencies have diligently adhered to the 2004 Wekiva Parkway and Protection Act, ... including setting aside 3,400 acres for conservation and planning several substantial wildlife bridges. The parkway also will have a minimal number of interchanges - to limit the amount of related development in this environmentally sensitive area.

=====

Q&A Notes:

- Wekiva Mitigation Bank (formerly New Garden Coal) -- 1,553 acres – Dec. 2005
- Neighborhood Lakes – 1,580 acres – Dec. 2006
- Pine Plantation – 380 acres – Oct. 2008

Protecting Nature – Sections 4A & 4B



WEKIVA PARKWAY

Some of the environmental protections can be seen here on the first sections of the parkway – Sections 4A and 4B. On the right is a wildlife jump-out that will allow animals who may wander onto the corridor to safely exit.

On the left, bat houses will provide shelter to as many as 1,200 animals each. The floodplain bridge in the middle of this section during the dry season will allow animals to pass under the parkway safely.

Wildlife fencing is 10 feet tall, with two feet underground to discourage animals from digging into the corridor.

This section opened on Jan. 20, 2016. It was built on one of several large parcels that were purchased for conservation as required by the 2004 Wekiva Parkway and Protection Act.

Lighting will be installed only in limited locations along the project to preserve the natural “look” and “dark skies” initiative for this environmentally sensitive area.

Wekiva Parkway Trail

10 Miles

Construction: 2017-2021

**Local Coordination:
Lake, Orange & Seminole Counties**

Connections:

- ✓ **West Orange Trail Extension**
- ✓ **Lake-Wekiva Trail (Planned)**
- ✓ **Seminole-Wekiva Trail Extension**

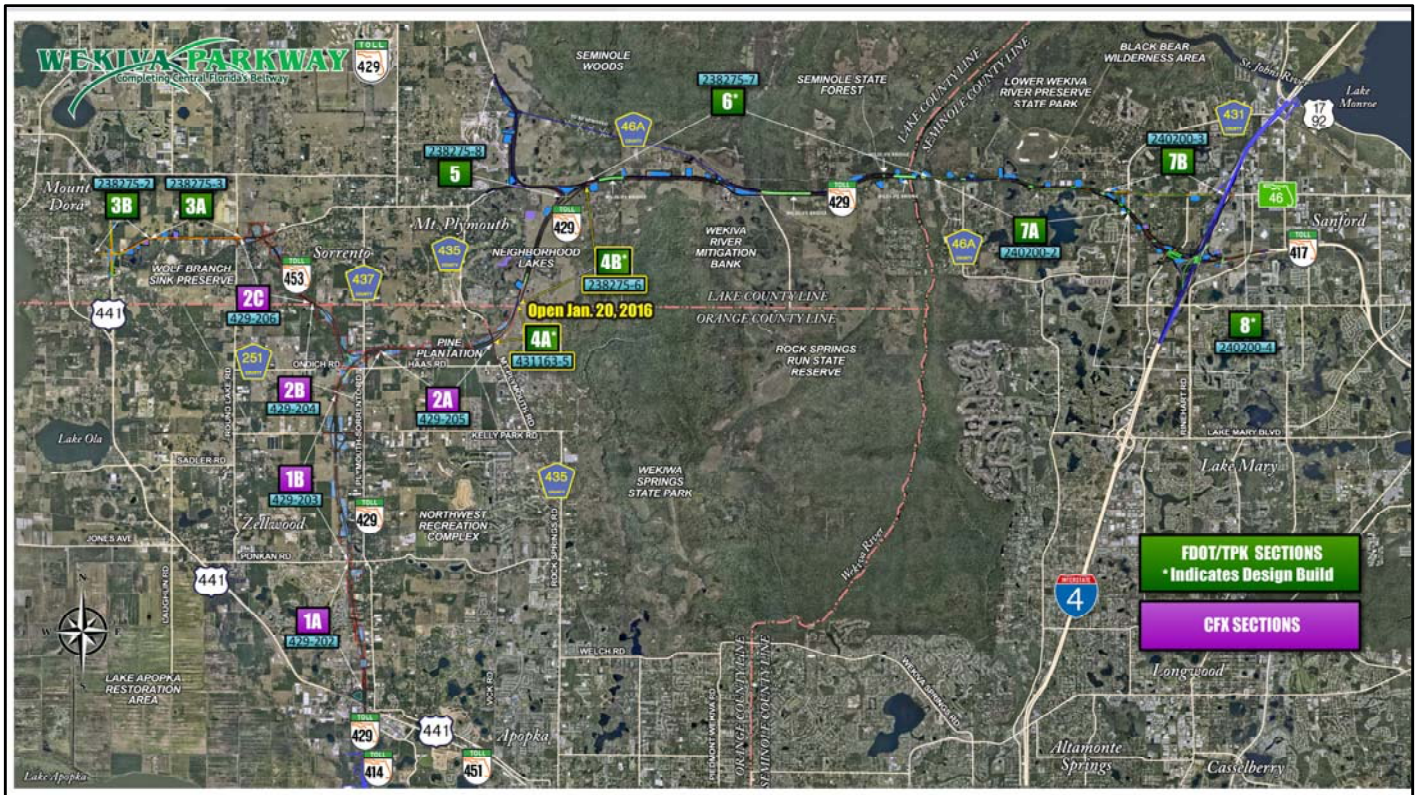


WEKIVA PARKWAY

FDOT is developing a trail that will parallel about 10 miles of the Wekiva Parkway. The trail is being designed concurrently with the parkway on sections 5, 6 and 7A. The Department in 2014 began design on a trail to roughly parallel Sections 4A and 4B.

The Section 4A and 4B trail is scheduled for construction in 2017. Other sections of the trail will be built concurrently with the parkway.

Once complete the parkway trail will connect to future extensions of the West Orange and Seminole Wekiva trails, as well as to the new Lake-Wekiva trail planned by Lake County.



As shown here, the Wekiva Parkway consists of 14 project sections. Two FDOT sections are now open. Three CFX sections are under construction.

The Department's sections are shown here in green. The CFX sections are shown in purple.

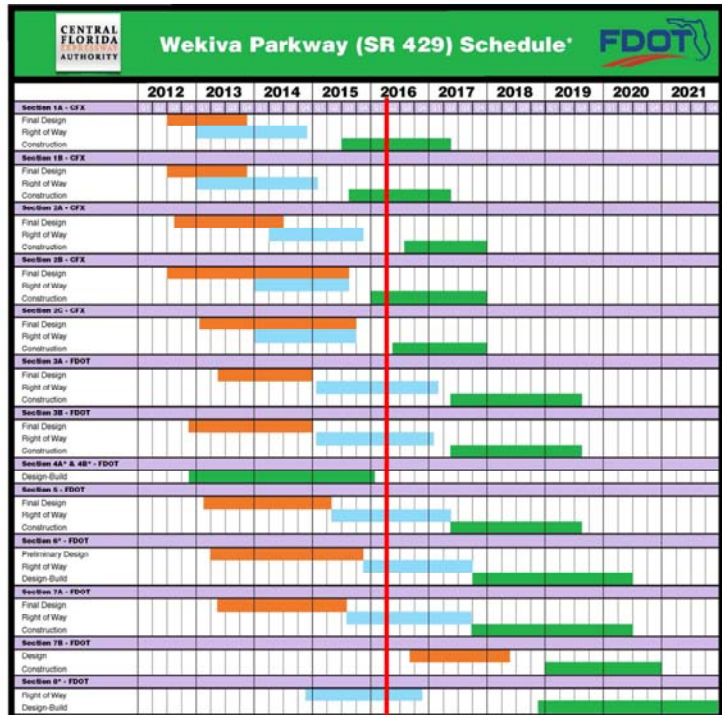
This map can be found on the www.wekivaparkway.com website.

The map on the home page is interactive – click on the flag for the section of interest to get more information and more detailed maps for that section.

Complete:

- Design – 2015*
- Property Acquisition – 2017
- Construction – 2021

*Section 7B: Design 2016-2018



Here is the latest overall project schedule. The project sections are listed along the left side. The red line shows where we are today in this process.

Keeping in mind that schedules are subject to change ... **Design – as shown by the orange bars – is largely done for the parkway.** Section 7B design will start late this year and finish in 2018.

Right of Way acquisition – shown in blue – is underway and should roughly be done by the end of 2017.

The green bars represent construction – with all of the sections scheduled to be open to traffic by late 2021.

Section 8 Design-Build Project



Tonight's focus is on the last part of the parkway, Section 8. This section will make the connection to I-4 and SR 417...

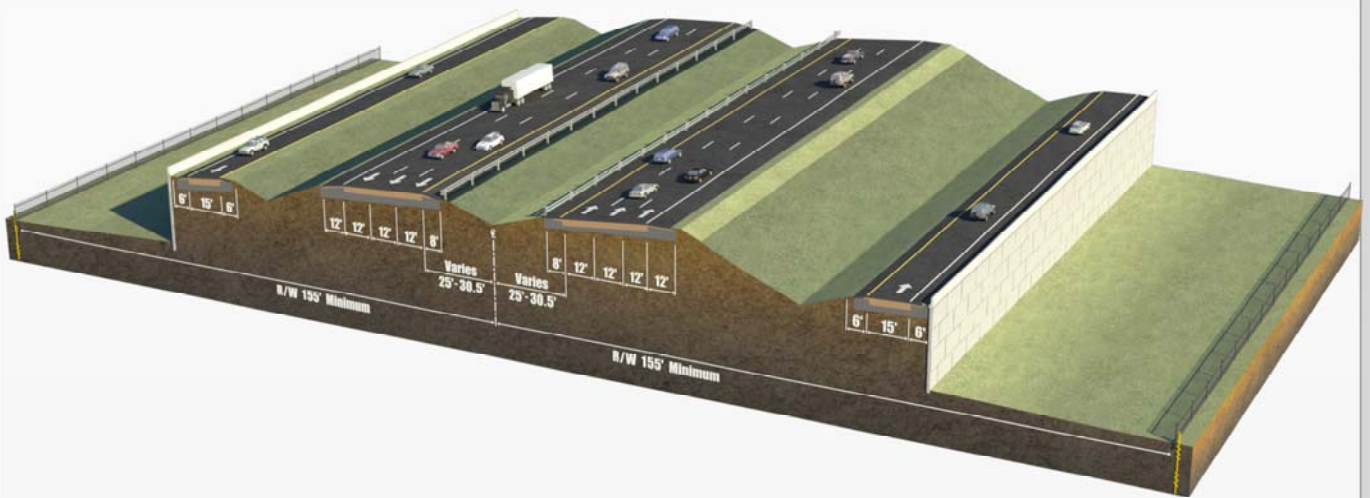
Section 8 - Changes Since 2013 Design Update

- Eliminates Impact to Seminole Towne Center
- Eliminates Third & Fourth Level Flyover Bridges
- Keeps SR 417 Ramp Connection to International Parkway
- Adds New Pond Location South End of Atlantic & Metz Avenues

Here you can see the changes to the preliminary design since the last public workshop in 2013. The latest design eliminates the impact to the Seminole Towne Center... and removes the third and fourth level flyover bridges – reducing the visual impact to the surrounding community.

The latest design keeps the current SR 417 ramp connection to International Parkway. Also a new retention pond will be located at the south end of Atlantic and Metz Avenues.

Section 8 - Typical Section at Tall Trees



Here you see a typical section view of the parkway along Section 8 near Tall Trees or Wilson Road. The right of way will be approximately 310 feet wide. There will be six lanes – three in each direction – due to the proximity of I-4.

You can also see the ramp lanes to and from International Parkway – on each side of the elevated parkway.

The parkway will be elevated here with aesthetic retaining walls. Fence will be installed along the right of way.

Section 8 - Rendering at Tall Trees



Wilson Road: 4 Bridges

Height: 23 Ft.
(Top of Barrier Wall)

Landscaping:
Future Project

Safety Lighting:
Bridge Underdecks
& Interchanges

Here's a rendering of what the parkway will look like at Wilson Road, southwest of Tall Trees. There will be four parkway bridges over the side street, two for the parkway and one each for the ramps to and from International Parkway.

The top of the barrier wall on the parkway will be approximately 23 feet high at the bridges. Future projects will include landscaping this section of the parkway.

The mainline parkway will not be lit. Lighting will be installed under bridges and at interchanges for safety.

Future Construction Impacts

Affected Side Streets:

Orange Blvd.
Wayside Dr.
Wilson Rd.

International Parkway
SR 417
I-4



Construction Vehicles
Detours
Pile Driving
Noise
Night Work

Road & Lane Closures
Utility Work
Dust
Vibration



FDOT wants drivers to be aware of some of the construction impacts to travelways that will occur during this project. Motorists can expect lane closures as well as other construction impacts, shown here.

The Department posts news about lane and road closures on wekivaparkway.com.

Motorists should always obey the posted speed limits, safety signs and devices in the work zone. Drivers should be mindful of construction vehicles entering and leaving the roadway.

Noise, dust and vibration are unavoidable byproducts of construction. We will do what we can to try to minimize these impacts. We also will provide the community with advance notification of lane and road closures, detours and night work, whenever possible.

Section 8 – Tolls

| FDOT Wekiva Parkway Toll Rates | | | | | | | | | | | |
|--|---------|--------------|--------|--------|--------|-------------|--------------------|--------|--------|--------|-------------|
| Mile-Post - Description | Section | SunPass Rate | | | | | TOLL-BY-PLATE Rate | | | | |
| | | 2 axle | 3 axle | 4 axle | 5 axle | Add'l axles | 2 axle | 3 axle | 4 axle | 5 axle | Add'l axles |
| 1-PLAZA (Between Interstate 4 and Orange Boulevard) | 8 | \$0.50 | \$1.00 | \$1.50 | \$2.00 | \$0.50 | \$0.75 | \$1.50 | \$2.25 | \$3.00 | \$0.75 |
| 2-PLAZA (Ramp at SR 46) | 7A | \$0.25 | \$0.50 | \$0.75 | \$1.00 | \$0.25 | \$0.50 | \$1.00 | \$1.50 | \$2.00 | \$0.50 |
| 7-PLAZA (Between Ramps East of River and SR 46) | 6 | \$1.00 | \$2.00 | \$3.00 | \$4.00 | \$1.00 | \$1.25 | \$2.50 | \$3.75 | \$5.00 | \$1.25 |
| 11-PLAZA (Between SR 46 and Mount Plymouth Road) | 4B | \$0.75 | \$1.50 | \$2.25 | \$3.00 | \$0.75 | \$1.00 | \$2.00 | \$3.00 | \$4.00 | \$1.00 |

Toll-By-Plate collects tolls by taking a photo of a vehicle's license plate as it travels through an FDOT tolling location. It then mails a monthly bill for the tolls, **plus a \$2.50 administrative charge**, to the registered owner of the vehicle.

There will be a toll gantry on Section 8. The toll will be \$0.50 for most vehicles with an E-PASS or SunPass transponder. The toll will be higher for vehicles with more than two axles.

For those without a transponder, the toll will be paid via the Toll by Plate program. The Toll by Plate cost for most vehicles will be \$0.75, plus the \$2.50 monthly processing fee. Again, the toll by plate cost for vehicles with more than two axles will be more expensive as shown here.

Toll-By-Plate collects tolls by taking a photo of a vehicle's license plate as it travels through an FDOT tolling location. It then mails a monthly bill for the tolls, **plus a \$2.50 administrative charge**, to the registered owner of the vehicle.

Section 8 – Projected Traffic

| Opening Year (2021) | Design Year (2032) |
|----------------------------|---------------------------|
| 43,000 | 82,500 |
| (Vehicles Per Day) | (Vehicles Per Day) |

When Section 8 opens in late 2021, this will complete the beltway around Central Florida. We anticipate about 43,000 vehicles a day to use this stretch of the parkway in the first year. By 2032, we expect more than 82,000 vehicles a day to use this section.

Section 8 – Additional Preliminary Design Details

I-4 Ultimate Connection:

- Accommodates I-4 Ultimate Typical Section Used Through Downtown Orlando (Corridor Consistency)
- I-4 Express Lanes Will Not be Constructed with this Project
- Provides Direct Connection from Future I-4 Express Lanes to SR 417 and SR 429



There is significant overlap on Section 8 with the Department's I-4 Ultimate managed lanes project. The preliminary design for Section 8 accommodates the I-4 Ultimate Typical Section used through downtown Orlando. This was needed to maintain corridor consistency.

The I-4 Express Lanes will not be built as part of this project. The Section 8 preliminary design provides a direct connection from the I-4 Express Lanes to SR 417 and SR 429.

Section 8 – What's Next?

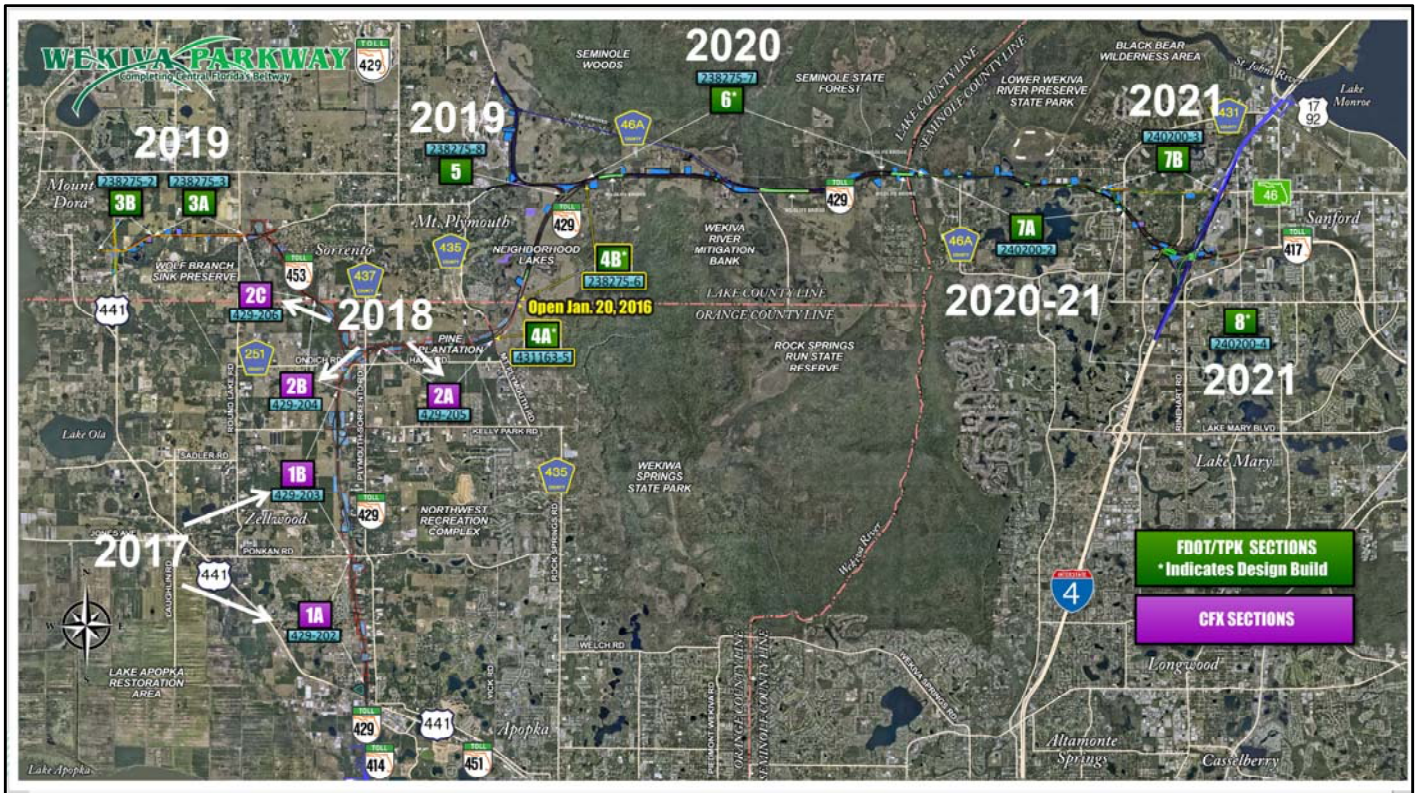
- **Continued Agency & Community Coordination**
- **Right-of-Way Acquisition: November 2016 – March 2018**
- **Advertise for Bids: January 2018**
- **Construction Begins: 2018**
- **Open to Traffic: Late 2021 (Wekiva Parkway Complete)**



The Department will continue to coordinate with the community and government agencies on plans for Section 8. Right of way acquisition, or buying needed property for the project, should be underway in earnest in November 2016, and finish in March of 2018.

FDOT will advertise for bids from design-build teams in January of 2018. Construction will begin late that year.

Section 8 – and the entire parkway – is scheduled to be open to traffic in late 2021.



Here's a snapshot of when the various Wekiva Parkway sections are expected to open to traffic. Basically the plan is to have a new section open every year or two, starting with Sections 4A & 4B that just opened on January 20. And then CFX's Section 1 in the spring of 2017 and so on.

All of the project is anticipated to be open to traffic by the end of 2021.

For More Information:

Mary Brooks

Public Information Officer

C: 407-694-5505

E: Info@wekivaparkway.com

W: www.wekivaparkway.com



The screenshot shows the Wekiva Parkway website with the following sections:

- CONSTRUCTION UPDATES:** A text block providing project details and a small image of a construction site.
- SCHEDULE:** A calendar-style grid showing construction phases.
- ALERTS:** A section with an image of orange traffic cones and text: "Prepare for your travel by finding out the latest news on lane and road closures and more".
- COMMUNITY PRESENTATIONS:** An image of people at a meeting with text: "Schedule a project update for your community or group. Check out the latest presentations on the Wekiva Parkway".
- VISUAL GALLERY:** An image of a bridge with text: "Want to see the latest photos and video on how the Wekiva Parkway is taking shape? CLICK HERE!".
- RIGHTS OF WAY:** A list of dates and locations for construction activities.



This presentation and all of the exhibits from today's public workshop will be placed on the www.wekivaparkway.com website by early next week.

You can also contact public information officer Mary Brooks as shown here with questions.

And for real time updates, follow the project on Facebook and twitter.



THANK YOU FOR ATTENDING!

✓ **Comment Forms**

✓ **Surveys**

**This presentation will begin again in
a few moments.**



We'd like to thank everyone for attending this preliminary design update for Section 8. We hope you have found this information helpful.

Project team members are here to address your questions. You also may submit questions or comments on the comment forms you received when you signed in.

You can also submit questions and comments to the project email address at info@wekivaparkway.com

We'd like to know how helpful you felt the meeting was tonight. There are surveys available for you to let us know how we're doing in terms of communicating with the public. We appreciate your feedback!

Once again the presentation and all of the materials should be posted on the wekivaparkway.com website next week. This presentation will begin again in a few moments.